

RFP 2020-10-02 HVAC Addendum # 2

The Village Building Department will require signed and sealed plans, based on the scope, which includes additional ductwork and load calculations.

Response to questions and Duct Plans Update

1. Are there any more plans than those posted on the website under addendum 1? There should be at least one more HVAC plan showing equipment capacities as we discovered some discrepancies between the indoor and outdoor existing A/C units. Final capacities – including electrical service- will need to be determined taken into account the new areas to be air conditioned, the information on these additional plans requested and the equipment observed during the walk-thru. –

RESPONSE: Please see the updated HVAC Duct Plans

2. Reference question 1; is there a life safety plan for the building? The scope for this project includes adding conditioned air thru ductwork to the infrastructure room and the stairwell. Life safety plans will show if any of these walls, especially the stairwell, are fire rated.

RESPONSE: We are unable to provide this information at this time.

3. To better clarify, please define the limits of the work related to the ductwork and piping reconnections. Confirm that the refrigerant lines are only being replaced as required to connect the new equipment and also that the new ductwork is limited to what is required to reconnect the new units. All other ductwork and refrigerant lines will then be existing-to-remain.

RESPONSE: New ductwork and refrigerant lines are limited to that necessary to properly connect to existing lines/ductwork. Notwithstanding the request for additional ductwork to stairwell etc.

4. Reference question 3; clarify if the existing-to-remain ductwork inside the mechanical rooms is to be cleaned/sanitized as per item 8 of page 9 of the RFP.

RESPONSE: Only those areas exposed (existing to remain ductwork) and readily accessible during the equipment changeout are required to be cleaned and sanitized.

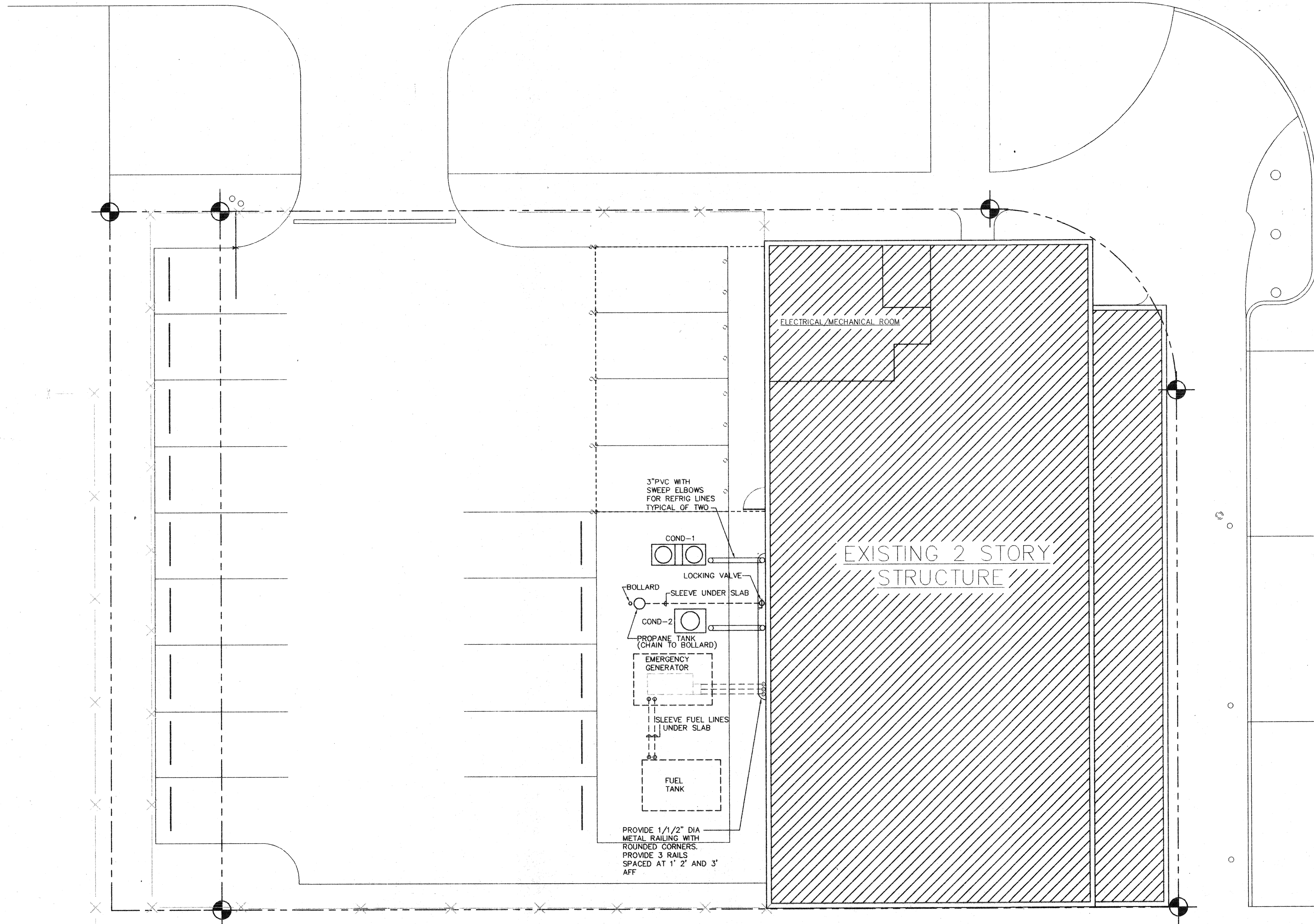
5. The existing ductwork is internally lined (no external insulation) inside the mechanical room. Confirm the new ductwork is to match the existing.

RESPONSE: New ductwork is to match existing.

6. Confirm the louver and the plywood backing is part of the scope (item 11, page 9) only if it is utilized as a pathway to rig the equipment in and out of the building.

RESPONSE: Correct


CAD FILE M:\9582\SITE\9582-MS1 PLOT DATE 12/06/95 AT 17:35 BY JFP



NORTH

MECHANICAL SITE PLAN

SCALE: 1/8" = 1'-0"

Proj. Mgr.	JHB	CONSULTANT
Job Capt.	JHB	
Drawn by	JFP	QED ENGINEERING, INC. CONSULTING ENGINEERS
Rev'd by	JFP	3901 SW 47th Ave. Suite 402 Davie, Florida 33314 Ph 305-791-2020 Fx 584-2345

©COPYRIGHT

THIS DOCUMENT IS PROPERTY OF PEACOCK COURTNEY, P.A. AND NO PART HEREIN SHALL BE USED EXCEPT FOR THE SPECIFIC PROJECT WITHOUT CONSENT OF PEACOCK COURTNEY ARCHITECTS, P.A.

THIS DOCUMENT WAS PREPARED BY PEACOCK COURTNEY ARCHITECTS, P.A. ACCORDING TO THE TERMS OF THE GENERAL CONDITIONS OF THE CONTRACT FOR CONSTRUCTION. THIS DOCUMENT DOES NOT EITHER IN WHOLE OR IN PART CONSTITUTE ANY DIRECTION OR INSTRUCTION TO ANY CONTRACTOR WITH REGARD TO CONSTRUCTION MEANS, METHODS OR TECHNIQUES. BY THIS DOCUMENT THE ARCHITECT DOES NOT INTEND TO EXPRESS ANY OPINION, DIRECTION OR INSTRUCTION OF ANY KIND WHATSOEVER AS TO THE MANNER IN WHICH THE CONSTRUCTION WORK IS TO BE ACCOMPLISHED.

Description:

Revisions

peacock courtney architects

800 fairway drive suite 292
deerfield beach, florida 33441 (305)428-8000

Project

VILLAGE OF MIAMI SHORES POLICE DEPARTMENT

THE VILLAGE OF MIAMI SHORES

Sheet Title

First Floor New Floor Plan

DATE 12/06/95

Sheet No.

PROJECT No. 95801

MS-1

[Handwritten signature]
12/7/95

AIR CONDITIONING UNIT SCHEDULE																								
SELECTION BASED ON : TRANE SPLIT SYSTEM				CAPACITIES (MBH)				INDOOR FAN DATA				FAN MOTOR				STRIP HEATER DATA				CONDENSER				FILTER
DESIG.	AREA SERVED	MODEL NUMBER	EER/SEER	MFG.	MBH SENSIBLE	MBH TOTAL	CFM SUPPLY	% O.A.	EXT. S.P. IN. W.G.	H.P.	RPM.	VOLTS PHASE	K.W.	STEP	VOLTS PHASE	FUSE (AMPS)	MCA	DESIG.	MODEL NUMBER	VOLTS PHASE	FUSE (AMPS)	MCA	TYPE	REMARKS
AHU-1	1st FLOOR	TWE180B	9.3	TRANE	105.5	185	5860	11.9	.05"	3.0	1100	240/3	10	1	240/3	45	42	COND-1	TTA180B	240/3	80	64		
AHU-2	2nd FLOOR	TWE180B	9.3	TRANE	92.7	154.5	5490	7.3	.05"	3.0	1100	240/3	10	1	240/3	45	42	COND-2	TTA150B	240/3	70	55.5		

S-SPLIT

EXHAUST FAN SCHEDULE											
DESIG.	LOCATION	MANUFACTURER	MODEL No.	CFM	E.S.P.	FAN RPM	H.P. (WATTS)	VOLT/PH	DRIVE	WALL/ROOF OPENING	SPECIAL FEATURES
EF-1	1st FLOOR	PENN	WXQ82	430	.125"	1750	1/12	120/1	D	WALL	①
EF-2	2nd FLOOR	PENN	AQ10L	1050	.125"	1525	1/4	120/1	D	ROOF	①
EF-3	2nd FLOOR	PENN	FMX9Q	720	.25"	1750	1/6	120/1	D	ROOF	①

① PROVIDE INSECT SCREEN, DISCONNECT SWITCH, AND LEK-TROL SPEED CONTROL.

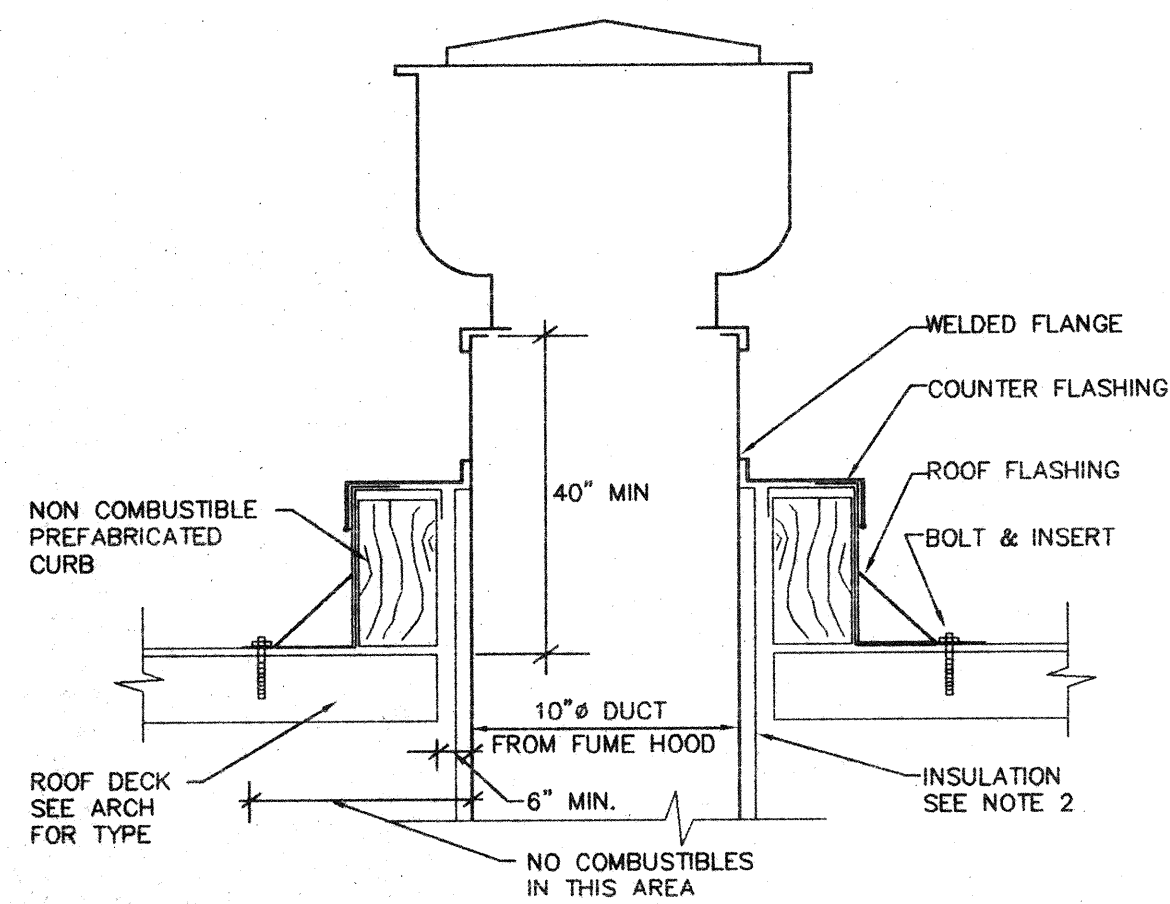
S-EFAN

DIFFUSER & GRILL SCHEDULE			
DESIG.	MANUFACTURER	MODEL No.	REMARKS
①	TITUS	TMS	2 x 2
②	TITUS	TMS-AA	2 x 2 ALUMINUM
③	TITUS	SG-TDC	12 x 12
④	TITUS	TMS-FR	2 x 2, FIRE RATED
⑤	TITUS	350 FL	16 x 16
⑥	TITUS	350 FL - O	12 x 12 W/ OBD
⑦	TITUS	CT-700	6 x 6, 10 x 6

S-DIFUSR

OUTSIDE AIR SCHEDULE ASHRAE 62-1989					
UNIT No.	AREA SERVED	# OF PEOPLE	CFM PER PERSON	FA REQ'D	FA SUPPLIED
AHU-1	1st FLOOR	35	20	700	750
AHU-2	2nd FLOOR	20	20	400	450
TOTAL				1100	1200
EXCESS					100

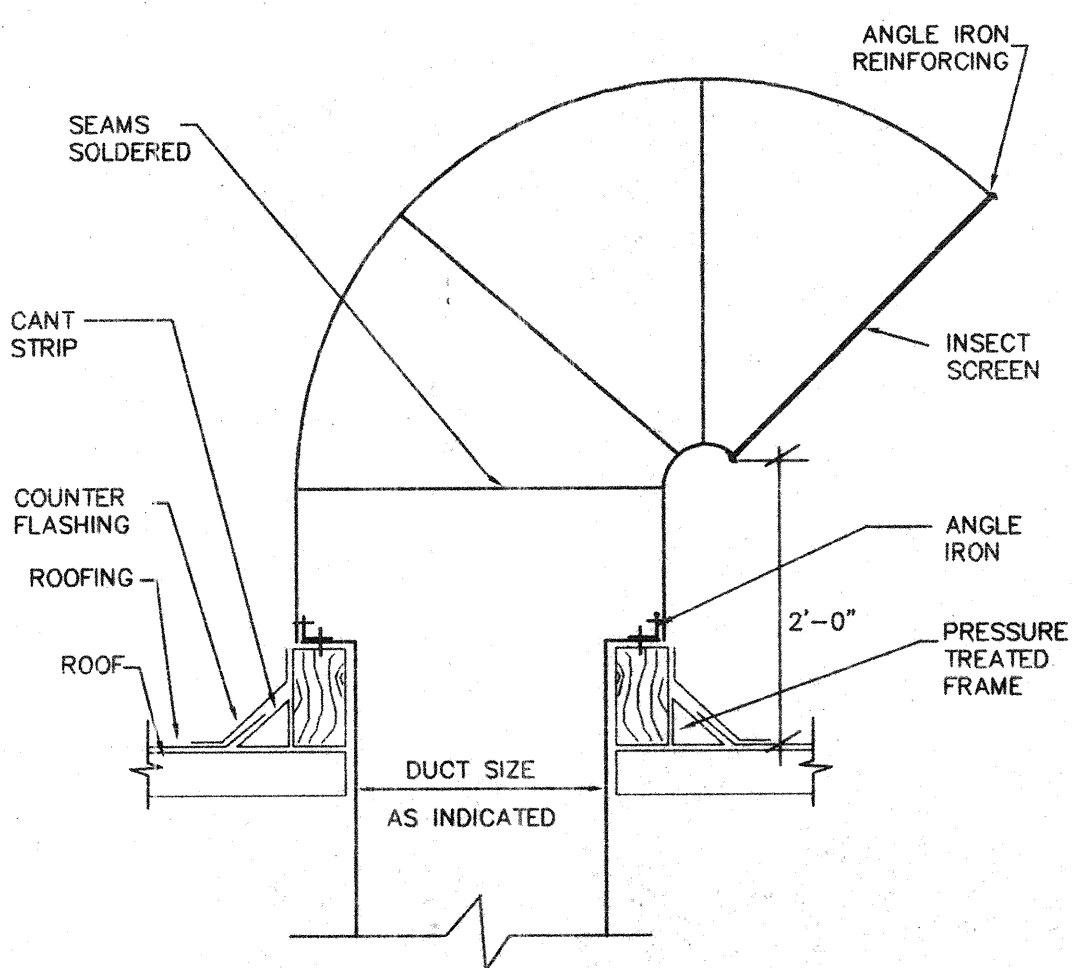
S-OAIR



NOTES:

1. ALL DUCTS TO BE WELDED.
2. INSULATION JOINTS TO BE BUTTED TIGHT TOGETHER AND HELD TIGHT TO DUCT WITH WELD PINS AND WASHERS ON 12" CENTERS

A EXHAUST FAN DETAIL
M-6 NO SCALE AV-HOOD6



B RECTANGULAR GOOSENECK
M-6 NO SCALE AV-GNCK1

AIR CONDITIONING SYMBOL LEGEND

SYMBOL	DEFINITION	ABBREVIATION
---	EXISTING DUCTWORK (SINGLE LINE)	
---	EXISTING DUCTWORK (DOUBLE LINE)	
---	EXISTING DUCTWORK TO BE REMOVED (SINGLE LINE)	
---	EXISTING DUCTWORK TO BE REMOVED	
N-N	NEW DUCTWORK (1st N = SIZE OF SIDE SHOWN)	
~	FLEXIBLE DUCT	
⌋	FIRE DAMPER	FD
⌋	SMOKE DAMPER	SD
⌋	VOLUME DAMPER	VD
⌋	OPPOSED BLADE DAMPER	OBD
⌋	ELECTRIC DUCT HEATER	EDH
⌋	DUCT DROP W/ BOTTOM FLAT	
⌋	DUCT RISE W/ TOP FLAT	
⌋	VANED ELBOW - PROVIDE ALL SQUARE OR RECTANGULAR ELBOWS WITH TURNING VANES.	
⊗	CEILING DIFFUSER	CD
⊗	RETURN REGISTER OR GRILLE	RG
⊗	EXHAUST REGISTER OR GRILLE	EG
⌋	SIDEWALL REGISTER	SW
---	LINEAR DIFFUSER	LD
⌋	DOOR GRILLE	DG
⊗	POSITIVE PRESSURE DUCT	
⊗	NEGATIVE PRESSURE RETURN DUCT	
⊗	NEGATIVE PRESSURE EXHAUST DUCT	
⊗	DUCT DETECTOR	DD
AC / AHU	AIR CONDITIONER/AIR HANDLING UNIT	AC or AHU
VAV	VARIABLE AIR VOLUME UNIT	VAV
---	EXISTING PIPING TO BE REMOVED	
CD	CONDENSATE PIPE	CD
CHWS	CHILLED WATER SUPPLY	CHWS
CHWR	CHILLED WATER RETURN	CHWR
CWS	CONDENSER WATER SUPPLY	CWS
CWR	CONDENSER WATER RETURN	CWR
CV	GATE VALVE	CV
CV	BUTTERFLY VALVE	CV
CV	CHECK VALVE	CV
CV	BALL VALVE	CV
CV	3/4" GATE VALVE WITH HOSE END ADAPTER	CV
CV	BALANCING VALVE	CV
CV	AUTOMATIC CONTROL VALVE	CV
FS	STRAINER WITH BLOW DOWN	FS
FM	UNION	FM
BV	FLOW MEASURING STATION	BV
ACV	FLOW METER	ACV
OT	ELBOW TURNING DOWN	OT
OT	AUTOMATIC AIR VENT	OT
OT	BOTTOM CONNECTION WITH SWING JOINT	OT
OT	OVER RIDE TIMER	OT
⊗	THERMOSTAT	
O.A.	OUTSIDE AIR	
⊗	NEW CONNECTION TO EXISTING	

NOTE: THESE ARE STANDARD SYMBOLS AND ALL MAY NOT APPEAR ON PROJECT DRAWINGS.

Proj. Mgr. JHB
Job Capt. JHB
Drawn by LAH
Rev'd by JFP

CONSULTANT
OED
OED ENGINEERING, INC.
CONSULTING ENGINEERS
3901 SW 47th Ave. Suite 402
Davie, Florida 33314
Certificate No. EB0005720
Ph 305-791-2020 Fx 584-2345

©COPYRIGHT
THIS DOCUMENT IS PROPERTY OF PEACOCK COURTNEY ARCHITECTS, P.A. AND NO PART HEREIN SHALL BE USED EXCEPT FOR THE SPECIFIC PROJECT WITHOUT CONSENT OF PEACOCK COURTNEY ARCHITECTS, P.A.
THIS DOCUMENT WAS PREPARED BY PEACOCK COURTNEY ARCHITECTS, P.A. ACCORDING TO THE TERMS OF THE GENERAL CONDITIONS OF THE CONTRACT FOR CONSTRUCTION. THIS DOCUMENT DOES NOT EITHER IN WHOLE OR IN PART CONSTITUTE ANY DIRECTION OR INSTRUCTION TO ANY CONTRACTOR WITH REGARD TO CONSTRUCTION MEANS, METHODS OR TECHNIQUES. BY THIS DOCUMENT THE ARCHITECT DOES NOT INTEND TO EXPRESS ANY OPINION, DIRECTION OR INSTRUCTION OF ANY KIND WHATSOEVER AS TO THE MANNER IN WHICH THE CONSTRUCTION WORK IS TO BE ACCOMPLISHED.

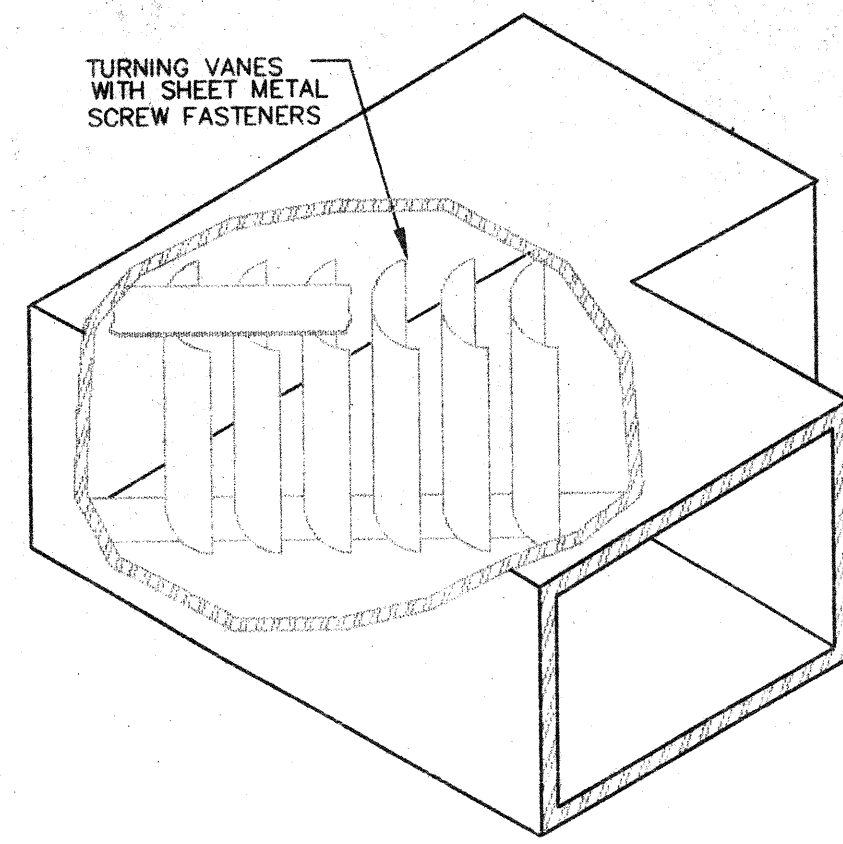
Description:
Revisions

peacock courtney architects
800 fairway drive suite 292
deerfield beach, florida 33441 (305)428-8000

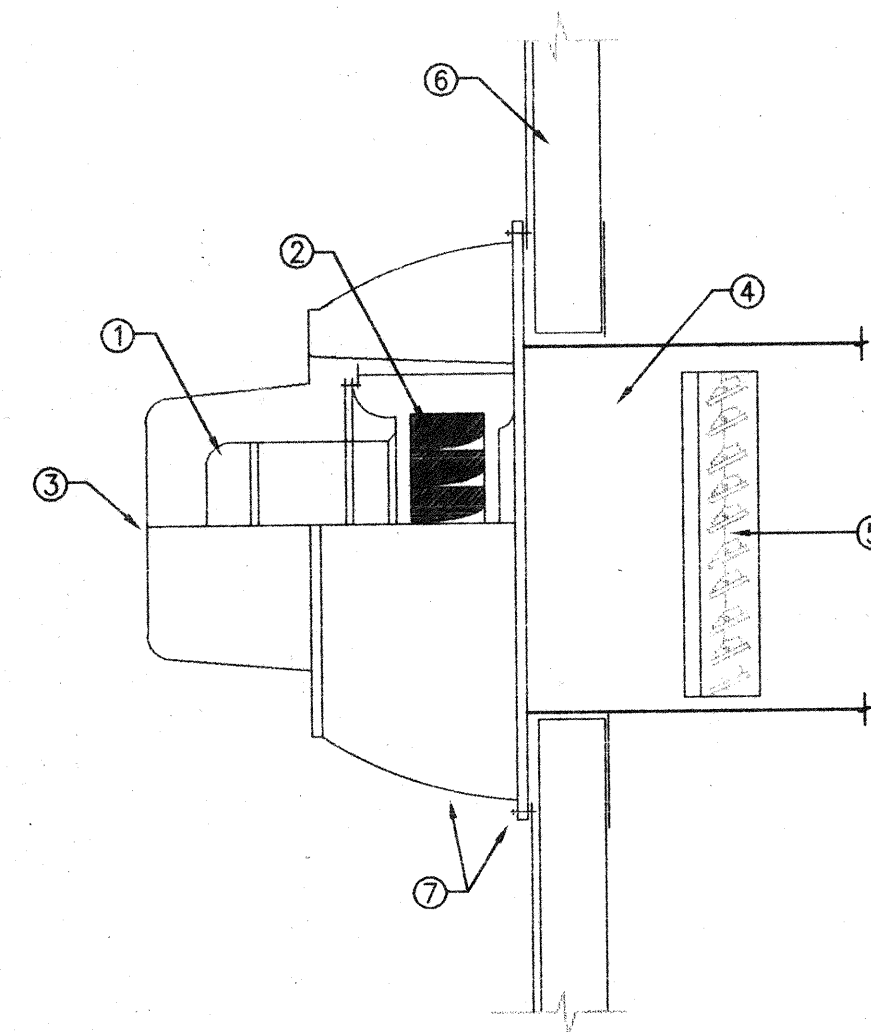
Project
VILLAGE OF MIAMI SHORES POLICE DEPARTMENT
THE VILLAGE OF MIAMI SHORES

Sheet Title
REAR SHEET

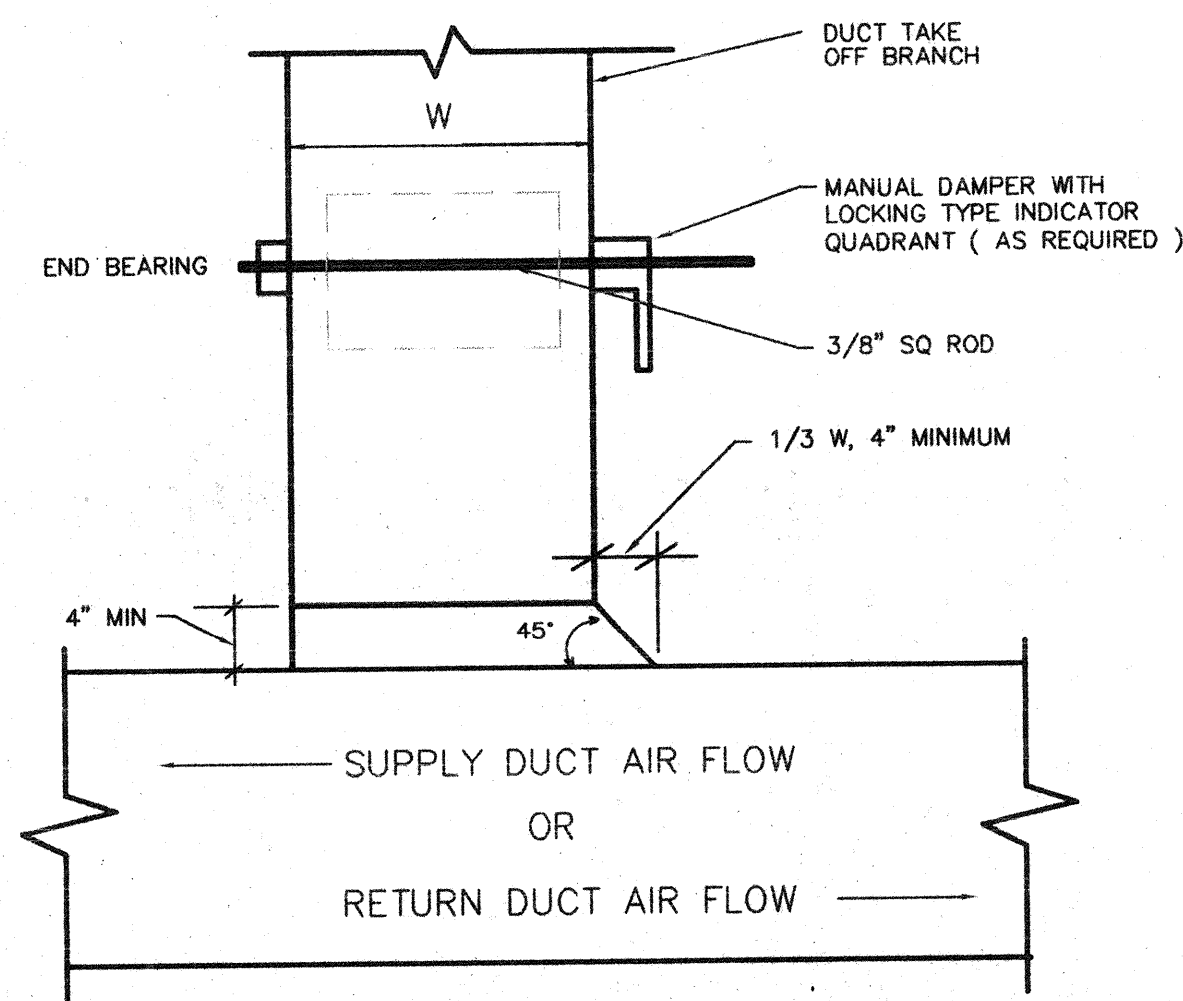
DATE 12/06/95
PROJECT No. 9590
Sheet No. **M-6**



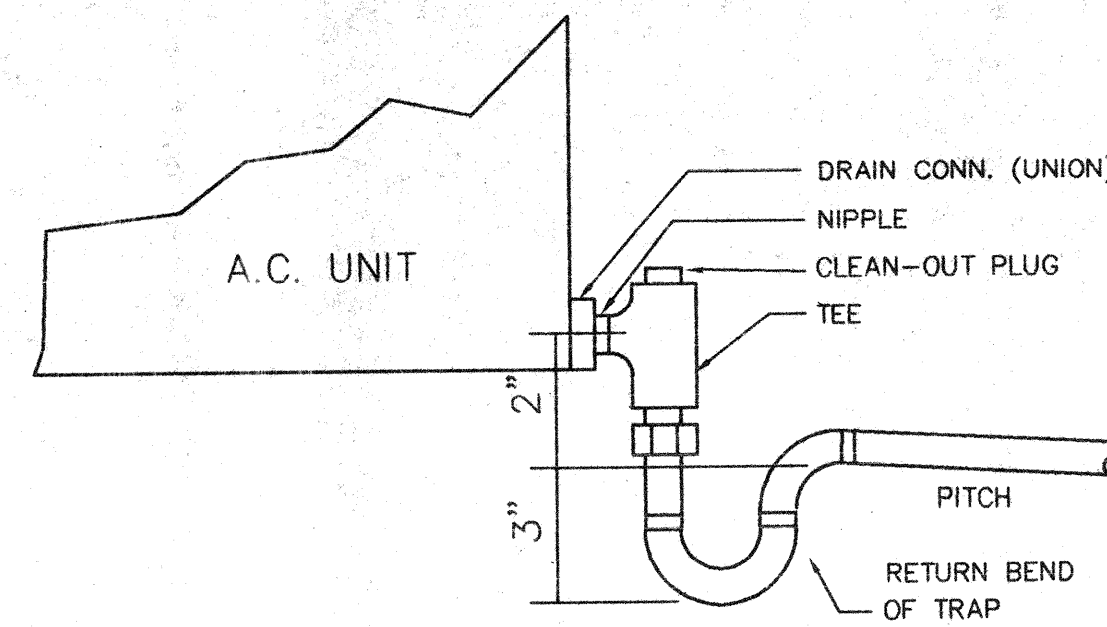
A TYPICAL ELBOW
M-5 NO SCALE AD-ELBOW



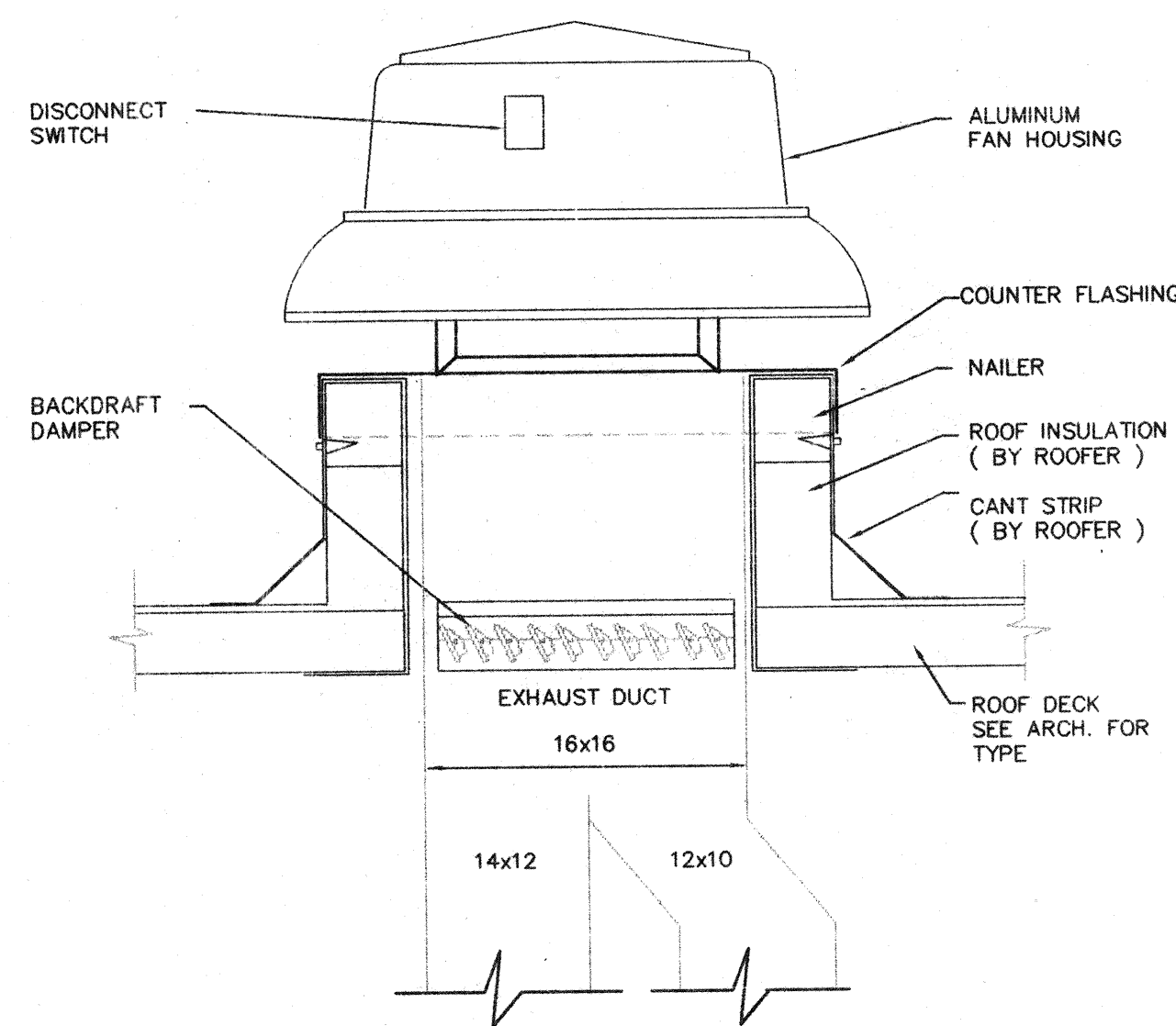
D FAN WITH BACKDRAFT DAMPER IN DUCT
M-5 NO SCALE AV-WFAN



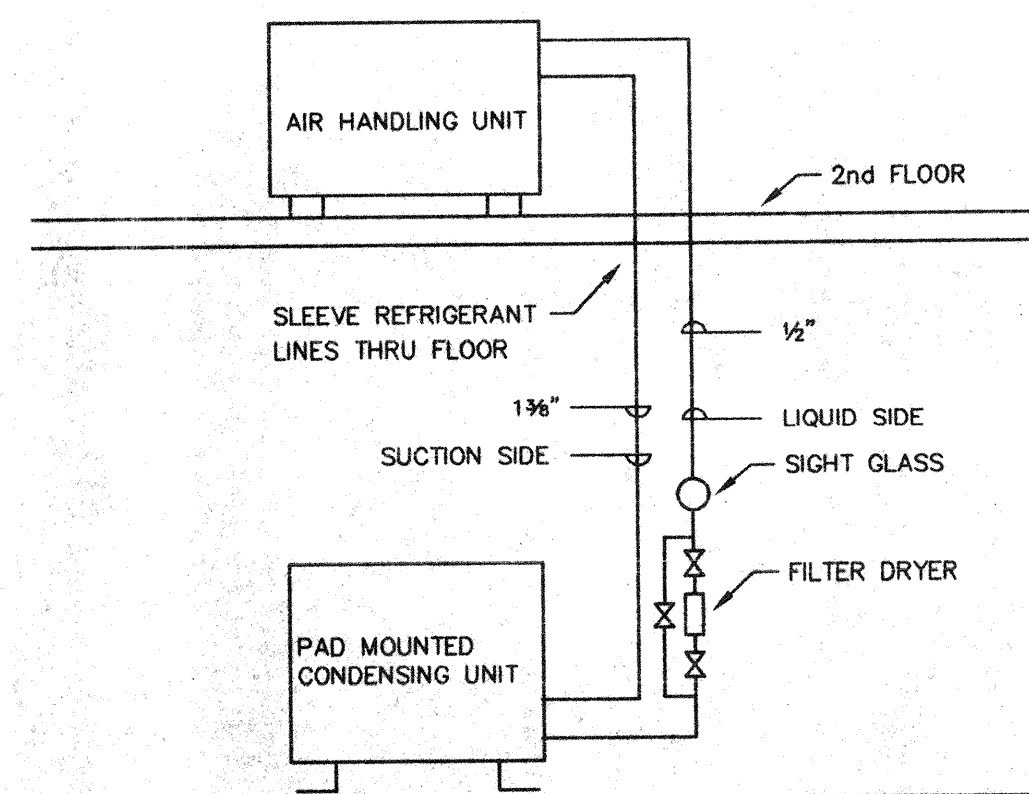
G SUPPLY & RETURN BRANCH CONNECTION
M-5 NO SCALE AD-SR-2



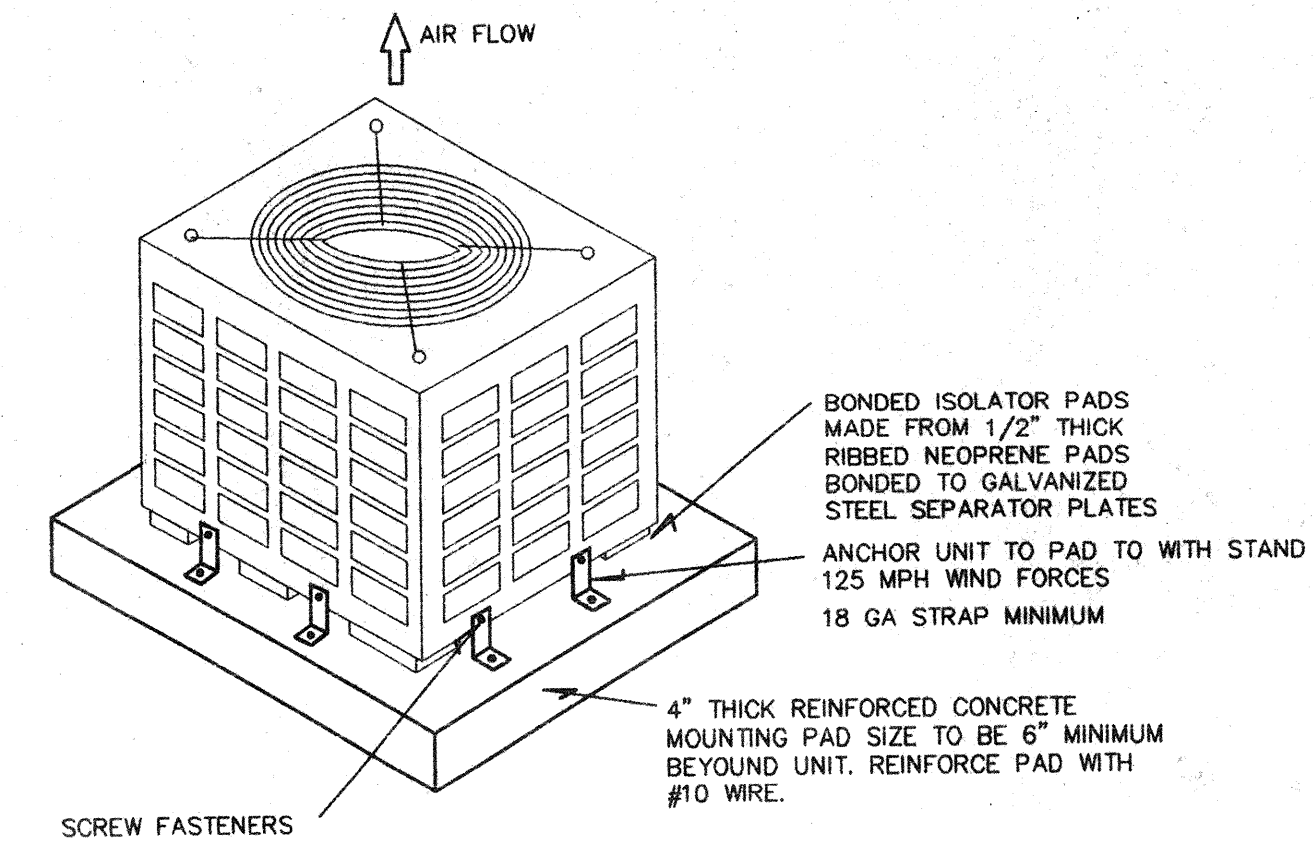
B CONDENSATE LINE TRAP DETAIL
M-5 NO SCALE AD-PAN



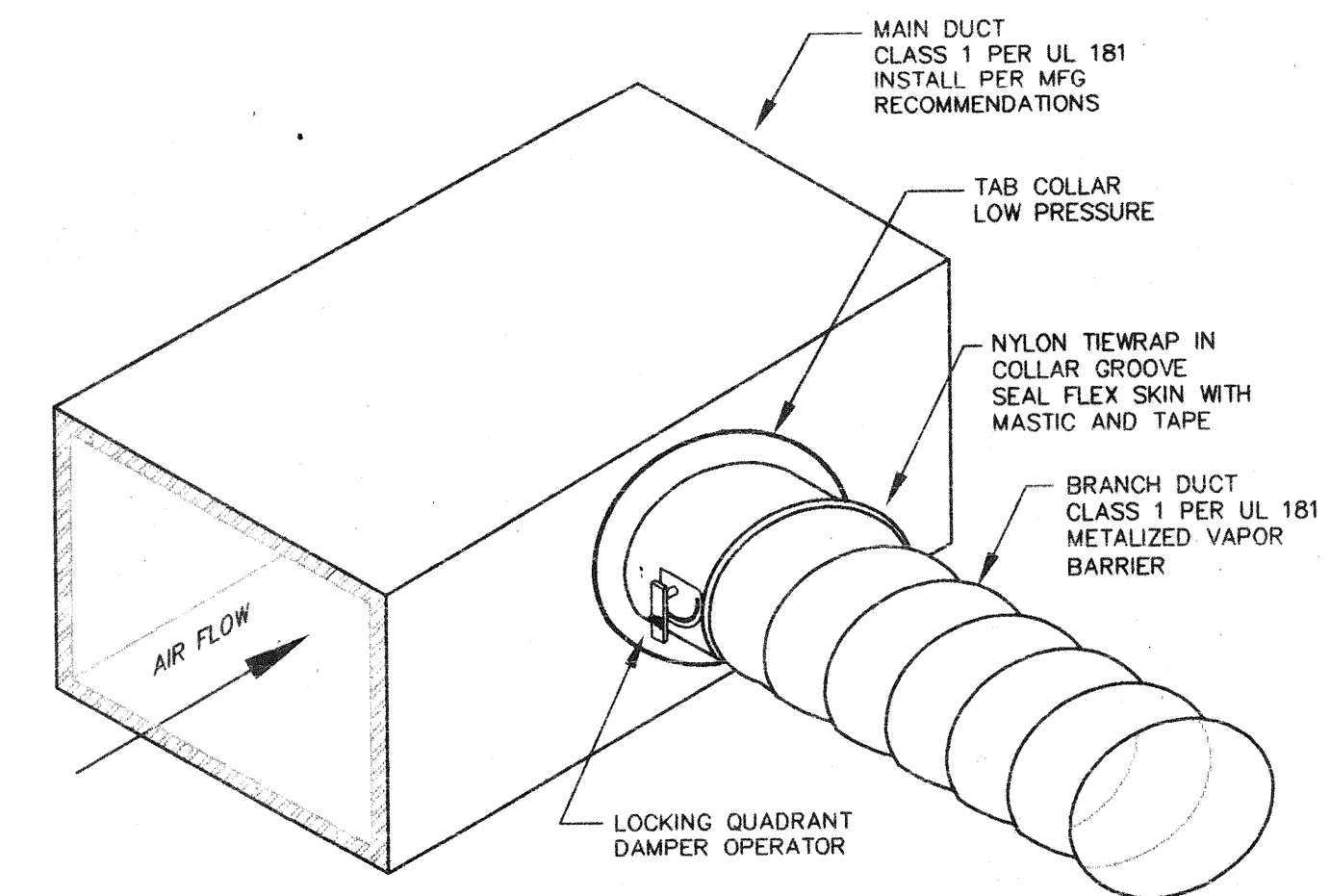
E ROOF EXHAUST FAN
M-5 NO SCALE AV-REXH1



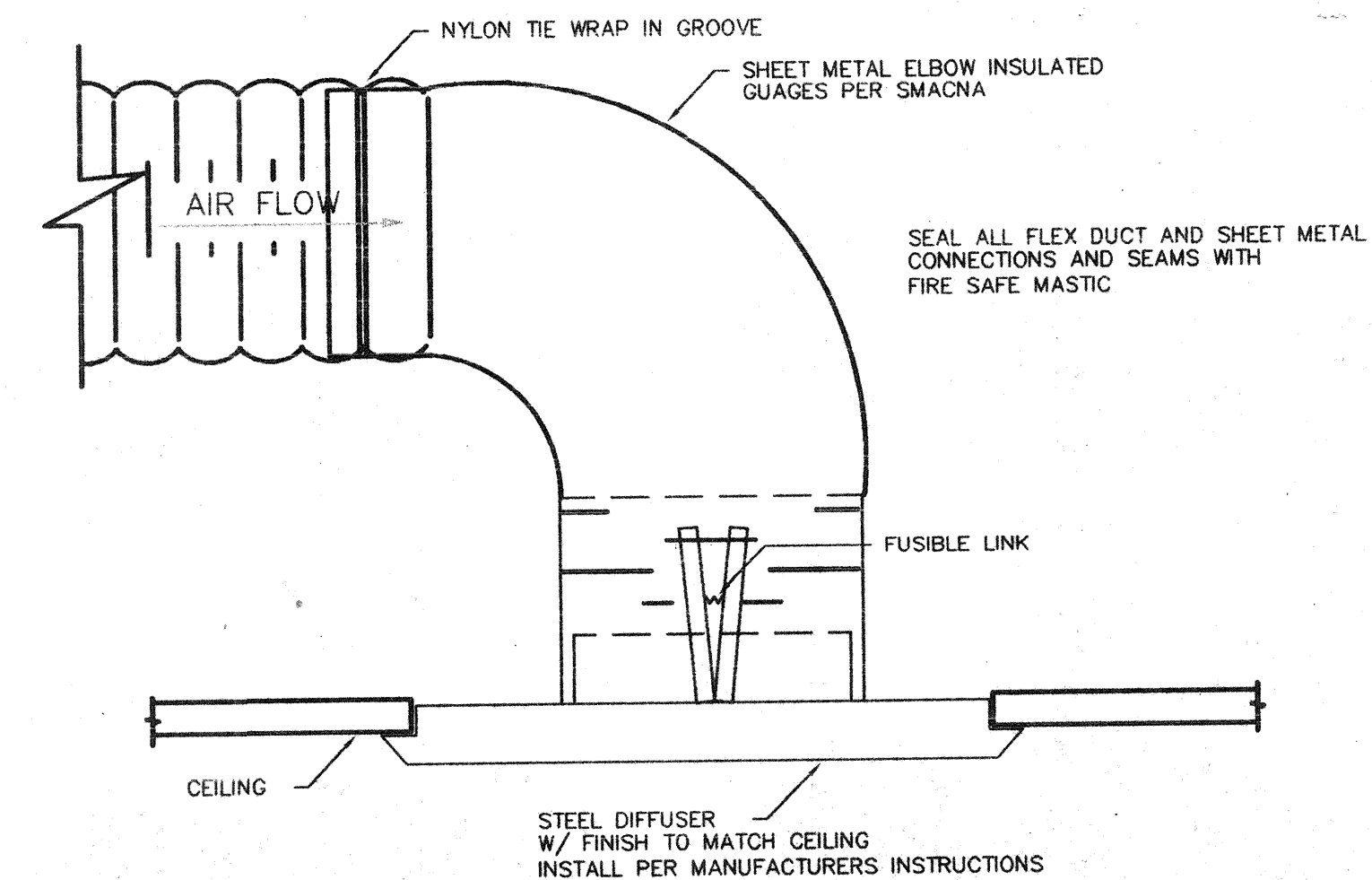
H REFRIGERANT PIPING SCHEMATIC
M-5 NO SCALE AP-RPEN1



C AIR COOLED CONDENSER MOUNTING DETAIL
M-5 NO SCALE AS-STAN9



F FLEXIBLE DUCT TAKEOFF
M-5 NO SCALE AD-FLEX5



I END OF SUPPLY BRANCH
M-5 NO SCALE AD-ENDF4

Proj. Mgr. LHB	CONSULTANT
Job Capt. LHB	QED
Drawn by LAH	QED ENGINEERING, INC. CONSULTING ENGINEERS
Rev'd by JFP	3901 SW 47th Ave, Suite 402 Dania, Florida 33314 Ph 305-791-2020 Fx 584-2345

©COPYRIGHT
THIS DOCUMENT IS PROPERTY OF PEACOCK COURTNEY ARCHITECTS, P.A. AND NO PART HEREIN SHALL BE USED EXCEPT FOR THE SPECIFIC PROJECT WITHOUT CONSENT OF PEACOCK COURTNEY ARCHITECTS, P.A.
THIS DOCUMENT WAS PREPARED BY PEACOCK COURTNEY ARCHITECTS, P.A. ACCORDING TO THE TERMS OF THE GENERAL CONDITIONS OF THE CONTRACT FOR CONSTRUCTION. THIS DOCUMENT DOES NOT EITHER IN WHOLE OR IN PART CONSTITUTE ANY DIRECTION OR INSTRUCTION TO ANY CONTRACTOR WITH REGARD TO CONSTRUCTION MEANS, METHODS OR TECHNIQUES. BY THIS DOCUMENT THE ARCHITECT DOES NOT INTEND TO EXPRESS ANY OPINION, DIRECTION OR INSTRUCTION OF ANY KIND WHATSOEVER AS TO THE MANNER IN WHICH THE CONSTRUCTION WORK IS TO BE ACCOMPLISHED.

Description:
Revisions

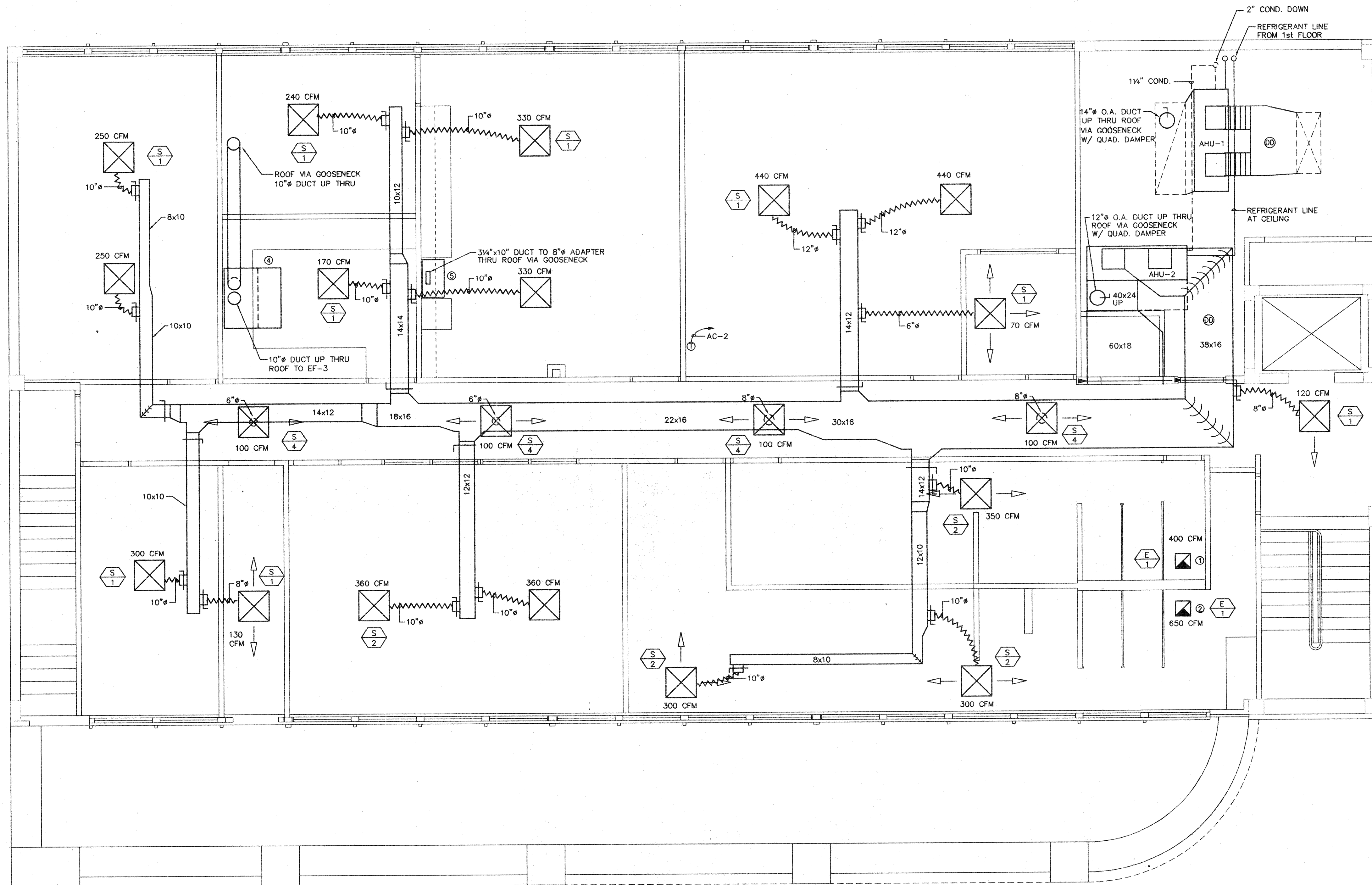
peacock courtney architects
800 fairway drive suite 292
deerfield beach, florida 33441 (305)428-8000

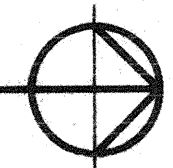
Project
VILLAGE OF MIAMI SHORES POLICE DEPARTMENT
THE VILLAGE OF MIAMI SHORES

Sheet Title
Details

DATE 12/06/95	Sheet No. M-5
PROJECT No. 95901 <i>JFP</i> 12.7.95	

CAD FILE M:\9592\2ND FLOOR\9592-M04 PLOT DATE 12/07/95 AT 08:43 BY JFP



2nd FLOOR NEW AIR CONDITIONING PLAN
SCALE: 1/4" = 1'-0"  NORTH

- NOTE:
- ① CONTRACTOR SHALL INSTALL 16x16 EXHAUST GRILL AND CONNECT 12x10 EXHAUST RISER TO ROOF FAN. (SEE DETAIL "E", SHEET M-5)
 - ② CONTRACTOR SHALL INSTALL 16x16 EXHAUST GRILL AND CONNECT 14x12 EXHAUST RISER TO ROOF FAN. (SEE DETAIL "E", SHEET M-5)
 - ③ EXHAUST DUCTWORK TO BE GALVANIZED SHEET METAL. ALL OTHER DUCTWORK TO BE 1 1/2" FIBERGLASS.
 - ④ CONTRACTOR SHALL INSTALL KEWAUNEE AUXILIARY AIR, AIRFLOW SUPREME BENCH TYPE FUME HOOD, MODEL # SH-1504-G.
 - ⑤ CONTRACTOR SHALL INSTALL 30" CONVERTIBLE PRESTIGE RANGE HOOD, BROAN MODEL # 763001, AND ASSOCIATED DUCTWORK.
 - ⑥ SHEET METAL REAR RETURN BOX 25" HIGH, 24" DEEP, 78" LONG. CONNECT 40 x 24 UP TO 60 x 18 R.A. W/ (1" x 1" SCREEN).

Proj. Mgr. JHB
Job Capt. JHB
Drawn by LAH
Rev'd by JFP

CONSULTANT
QED
QED ENGINEERING, INC.
CONSULTING ENGINEERS
3901 SW 47th Ave. Suite 402
Davie, Florida 33314
Ph 305-791-2020 Fx 584-2345

©COPYRIGHT
THIS DOCUMENT IS PROPERTY OF PEACOCK COURTNEY ARCHITECTS, P.A. AND NO PART HEREIN SHALL BE USED EXCEPT FOR THE SPECIFIC PROJECT WITHOUT CONSENT OF PEACOCK COURTNEY ARCHITECTS, P.A.

THIS DOCUMENT WAS PREPARED BY PEACOCK COURTNEY ARCHITECTS, P.A. ACCORDING TO THE TERMS OF THE GENERAL CONDITIONS OF THE CONTRACT FOR CONSTRUCTION. THIS DOCUMENT DOES NOT EITHER IN WHOLE OR IN PART CONSTITUTE ANY DIRECTION OR INSTRUCTION TO ANY CONTRACTOR WITH REGARD TO CONSTRUCTION MEANS, METHODS OR TECHNIQUES. BY THIS DOCUMENT THE ARCHITECT DOES NOT INTEND TO EXPRESS ANY OPINION, DIRECTION OR INSTRUCTION OF ANY KIND WHATSOEVER AS TO THE MANNER IN WHICH THE CONSTRUCTION WORK IS TO BE ACCOMPLISHED.

Description:
Revisions:

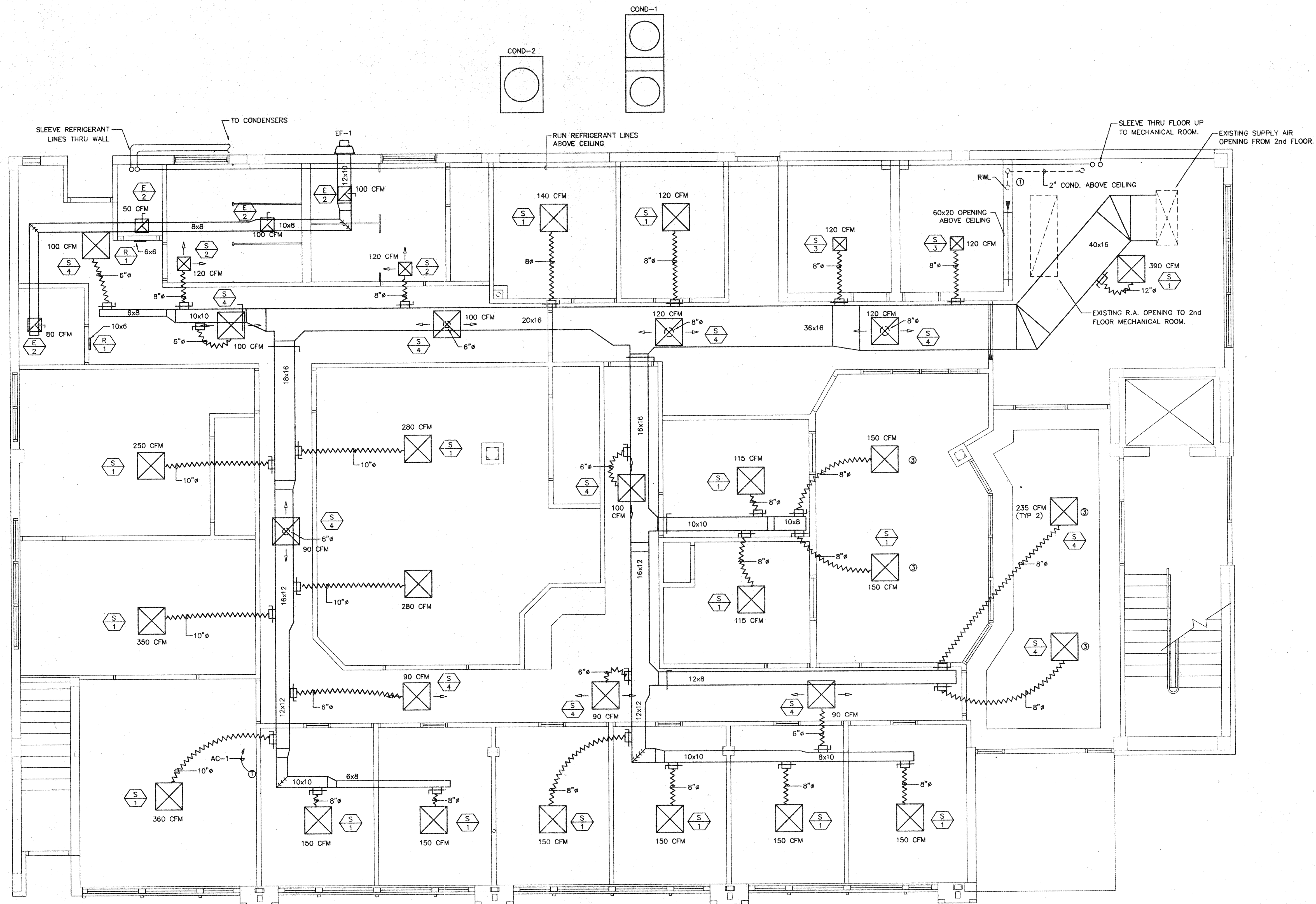
peacock courtney architects
800 fairway drive suite 292
deerfield beach, florida 33441 (305)428-8000

Project
VILLAGE OF MIAMI SHORES POLICE DEPARTMENT
THE VILLAGE OF MIAMI SHORES

Sheet Title
Second Floor New Floor Plan

DATE 12/06/95
PROJECT No. 95901
Sheet No. **M-4**

CAD FILE M:\9592\1STFLOOR\9592-003 PLOT DATE 12/07/95 AT 06:25 BY JFP



SCALE: 1/4" = 1'-0"



- NOTE:
- ① CONTRACTOR SHALL CONNECT 2" CONDENSATE TO EXISTING RAIN WATER LEADER.
 - ② EXHAUST DUCTWORK TO BE GALVANIZED SHEET METAL. ALL OTHER DUCTWORK TO BE 1 1/2" FIBERGLASS.
 - ③ CONTRACTOR SHALL INSTALL SURFACE MOUNTED DIFFUSERS AS SHOWN. (SEE DETAIL "1", SHEET M-5.)
 - ④ CEILING TO BE RETURN AIR PLENUM. NO COMBUSTIBLES PERMITTED. RETURN AIR THROUGH LIGHT FIXTURES.
 - ⑤ CORRIDOR 1HR FIRE RATED. CORRIDOR DIFFUSERS TO BE BZZU MOUNTED PER MANUFACTURERS RECOMMENDATIONS.

Proj. Mgr. JHB
Job Capt. JHB
Drawn by LAH
Rev'd by JFP

CONSULTANT
OED
OED ENGINEERING, INC.
CONSULTING ENGINEERS
3901 SW 47th Ave. Suite 402
Certificate No. EB0005720
Dania, Florida 33314
Ph 305-791-2020 Fx 584-2345

©COPYRIGHT
THIS DOCUMENT IS PROPERTY OF PEACOCK COURTNEY ARCHITECTS, P.A. AND NO PART HEREIN SHALL BE USED EXCEPT FOR THE SPECIFIC PROJECT WITHOUT CONSENT OF PEACOCK COURTNEY ARCHITECTS, P.A.

THIS DOCUMENT WAS PREPARED BY PEACOCK COURTNEY ARCHITECTS, P.A. ACCORDING TO THE TERMS OF THE GENERAL CONDITIONS OF THE CONTRACT FOR CONSTRUCTION. THIS DOCUMENT DOES NOT EITHER IN WHOLE OR IN PART CONSTITUTE ANY DIRECTION OR INSTRUCTION TO ANY CONTRACTOR WITH REGARD TO CONSTRUCTION MEANS, METHODS OR TECHNIQUES. BY THIS DOCUMENT THE ARCHITECT DOES NOT INTEND TO EXPRESS ANY OPINION, DIRECTION OR INSTRUCTION OF ANY KIND WHATSOEVER AS TO THE MANNER IN WHICH THE CONSTRUCTION WORK IS TO BE ACCOMPLISHED.

Description:
Revisions

peacock courtney architects

800 fairway drive suite 292
deerfield beach, florida 33441 (305)428-8000

Project

**VILLAGE OF
MIAMI SHORES
POLICE
DEPARTMENT**
THE VILLAGE OF
MIAMI SHORES

Sheet Title
**First Floor
New Floor Plan**

DATE
12/06/95

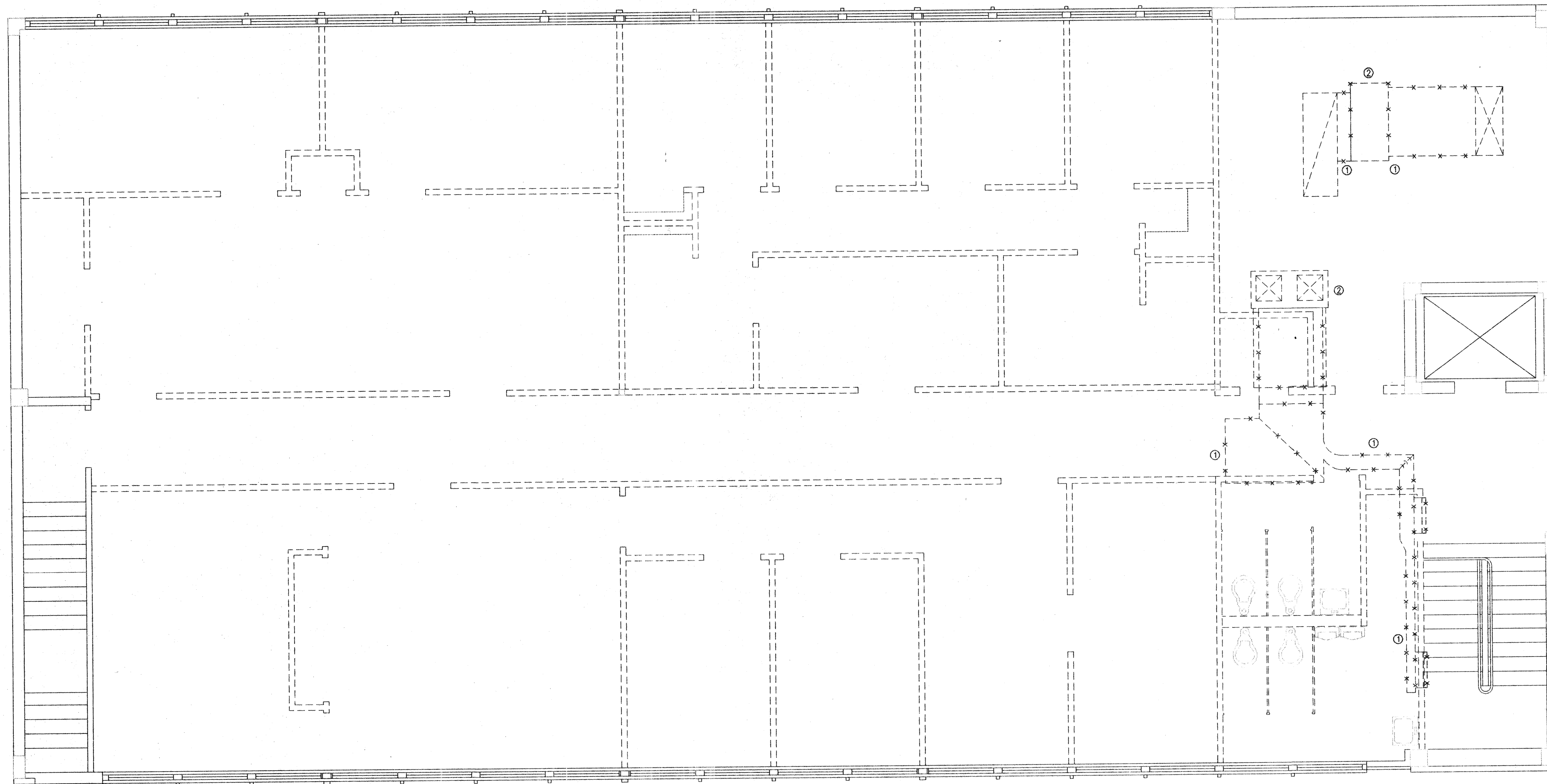
PROJECT No.
95901

Sheet No.

M-3


[Handwritten signature]
12/7/95

CAD FILE N:\9592\2ND FLOOR\9592-M02 PLOT DATE 12/06/95 AT 14:56 BY JSF



2nd FLOOR EXISTING
AIR CONDITIONING PLAN
SCALE: 1/4" = 1'-0" NORTH

- NOTE:
- ① CONTRACTOR SHALL REMOVE EXISTING DUCTWORK AS SHOWN.
 - ② CONTRACTOR SHALL REMOVE EXISTING AIR HANDLING UNITS, PIPING, AND ASSOCIATED DUCTWORK.

Proj. Mgr. JHB	CONSULTANT
Job Capt. JHB	
Drawn by LAH	OED ENGINEERING, INC. CONSULTING ENGINEERS 3901 SW 47th Ave. Suite 402 Certificate No. EB0005720
Rev'd by JFP	Davie, Florida 33314 Ph 305-791-2020 Fx 584-2345

©COPYRIGHT
THIS DOCUMENT IS PROPERTY OF PEACOCK COURTNEY, P.A. AND NO PART HEREIN SHALL BE USED EXCEPT FOR THE SPECIFIC PROJECT WITHOUT CONSENT OF PEACOCK COURTNEY ARCHITECTS, P.A.

THIS DOCUMENT WAS PREPARED BY PEACOCK COURTNEY ARCHITECTS, P.A. ACCORDING TO THE TERMS OF THE GENERAL CONDITIONS OF THE CONTRACT FOR CONSTRUCTION. THIS DOCUMENT DOES NOT EITHER IN WHOLE OR IN PART CONSTITUTE ANY DIRECTION OR INSTRUCTION TO ANY CONTRACTOR WITH REGARD TO CONSTRUCTION MEANS, METHODS, OR TECHNIQUES. BY THIS DOCUMENT THE ARCHITECT DOES NOT INTEND TO EXPRESS ANY OPINION, DIRECTION OR INSTRUCTION OF ANY KIND WHATSOEVER AS TO THE MANNER IN WHICH THE CONSTRUCTION WORK IS TO BE ACCOMPLISHED.

Description:
Revisions

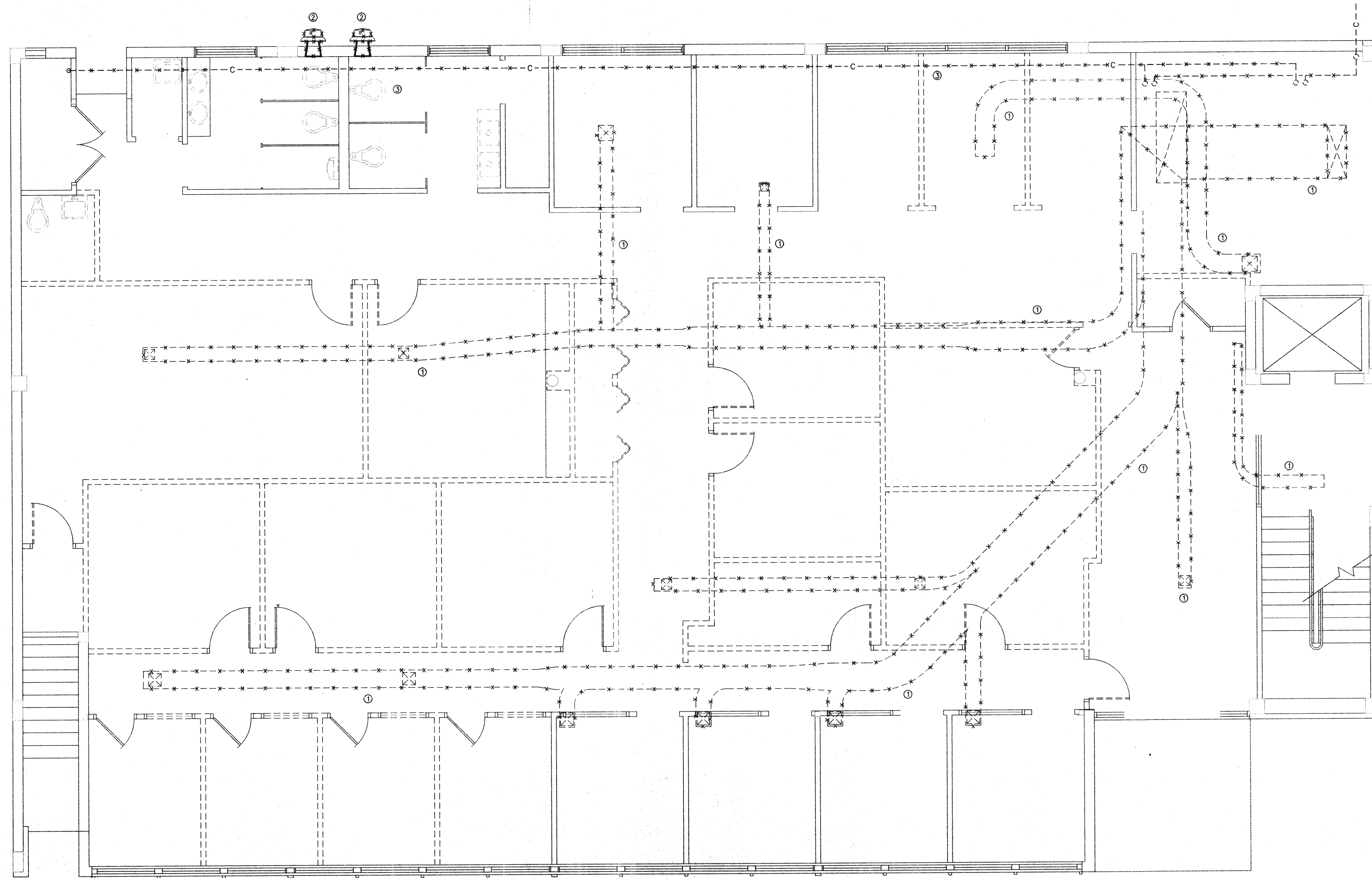
peacock courtney architects
800 fairway drive suite 292
deerfield beach, florida 33441 (305)428-8000

Project
VILLAGE OF MIAMI SHORES POLICE DEPARTMENT
THE VILLAGE OF MIAMI SHORES

Sheet Title
Second Floor Existing Floor Plan

DATE 12/06/95	Sheet No.
PROJECT No. 95901	M-2

CAD FILE M:\9592\1STFLOOR\9592-101 PLOT DATE 12/05/95 AT 14:45 BY JSF



1st FLOOR EXISTING
AIR CONDITIONING PLAN

SCALE: 1/4" = 1'-0"



NOTE:

- ① CONTRACTOR SHALL REMOVE EXISTING DUCTWORK AS SHOWN.
- ② CONTRACTOR SHALL REMOVE EXISTING EXHAUST FAN AND GRILL. PATCH OPENING TO MATCH EXISTING.
- ③ CONTRACTOR SHALL REMOVE EXISTING CONDENSER WATER PIPING AS SHOWN.

Proj. Mgr. JHB	CONSULTANT
Job Capt. JHB	OED
Drawn by LAH	OED ENGINEERING, INC. CONSULTING ENGINEERS
Rev'd by JFP	3901 SW 47th Ave, Suite 402 Certificate No. EB0005720 Davie, Florida 33314 Ph 305-791-2020 Fx 584-2345

©COPYRIGHT

THIS DOCUMENT IS PROPERTY OF PEACOCK COURTNEY ARCHITECTS, P.A. AND NO PART HEREIN SHALL BE USED EXCEPT FOR THE SPECIFIC PROJECT WITHOUT CONSENT OF PEACOCK COURTNEY ARCHITECTS, P.A.

THIS DOCUMENT WAS PREPARED BY PEACOCK COURTNEY ARCHITECTS, P.A. ACCORDING TO THE TERMS OF THE GENERAL CONDITIONS OF THE CONTRACT FOR CONSTRUCTION. THIS DOCUMENT DOES NOT EITHER IN WHOLE OR IN PART CONSTITUTE ANY DIRECTION OR INSTRUCTION TO ANY CONTRACTOR WITH REGARD TO CONSTRUCTION MEANS, METHODS OR TECHNIQUES. BY THIS DOCUMENT THE ARCHITECT DOES NOT INTEND TO EXPRESS ANY OPINION, DIRECTION OR INSTRUCTION OF ANY KIND WHATSOEVER AS TO THE MANNER IN WHICH THE CONSTRUCTION WORK IS TO BE ACCOMPLISHED.

Description:

Revisions

peacock courtney architects

800 fairway drive suite 292
deerfield beach, florida 33441 (305)428-8000

Project

**VILLAGE OF
MIAMI SHORES
POLICE
DEPARTMENT**
THE VILLAGE OF
MIAMI SHORES

Sheet Title

**First Floor
Existing Floor Plan**

DATE
12/06/95

Sheet No.

PROJECT No.
9592

M-1

Handwritten signature and date 12/1/95